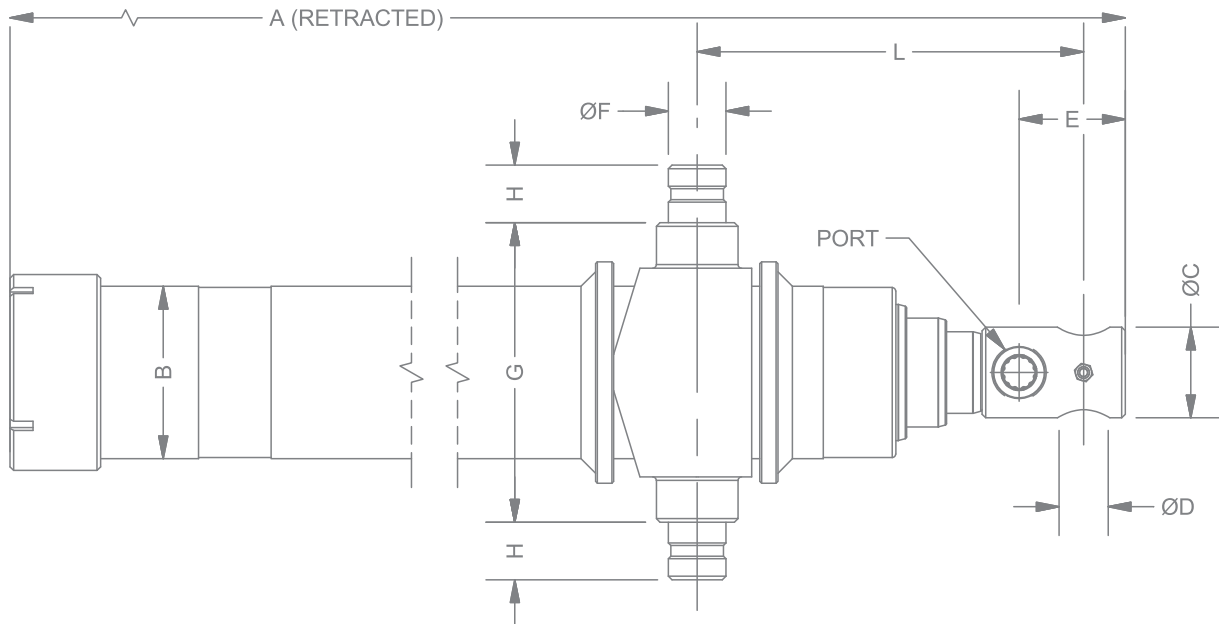


WELDED HYDRAULIC CYLINDERS WTO/WT1 3000PSI



WELDED HYDRAULIC CYLINDERS WTO/WT1 3000PSI



TELESCOPIC CYLINDER

PART NUMBER	STROKE	A	B	C	D	E	F	G	H	L	PORT	WEIGHT [Lbs]	VOLUME [Gal.]
7 TONS INVERSE													
606070783	78"	35.5"	3.75"	2"	1.063"	3.0"	1.25"	6.5"	1.25"	7"	"SAE #8 (3/4-16UNF)"	68	1.6
606070903	90"	39.5"	3.75"	2"	1.063"	3.0"	1.25"	6.5"	1.25"	7"		75	1.8
606071083	108"	45"	3.75"	2"	1.063"	3.0"	1.25"	6.5"	1.25"	7"		101	2.2
12 TONS INVERSE													
606120783	78"	34.75"	4.4"	2"	1.063"	3.0"	1.5"	7.5"	1.5"	7"	SAE #8 (3/4-16UNF)	106	2.5
606120903	90"	38.7"	4.4"	2"	1.063"	3.0"	1.5"	7.5"	1.5"	7"		107	2.8
606121083	108"	44.75"	4.4"	2"	1.063"	3.0"	1.5"	7.5"	1.5"	7"		132	3.4
606121203	120"	48.75"	4.4"	2"	1.063"	3.0"	1.5"	7.5"	1.5"	7"		143	3.8
606121443	144"	56.78"	4.4"	2"	1.063"	2.25"	1.5"	7.5"	1.5"	7"		166	4.6